

The Apple Blossom

March 2010

www.orchardmanor.org

Vol. V Issue 3

A Note from the Administrator

Our Memory Quilt is Growing!

Diane Robinson, NHA
Administrator

Amber Morian-Gowetski, NHA
Assistant Administrator

Cyndi DiBiase, RN
Acting Director of Nursing

Tara Michaels, MSW, LSW
Social Services/Admissions

Denise Armstrong
Social Services/Admissions

Joe Berringer
Human Resources

Emily Robinson
Activity Director

Judy Boyd
Controller

Verlynda Moyers
Business Office Clerk

Marlene Gaggini
Billing Office Assistant

Donna Roberts, CDM
Dietary Supervisor

Rich Tallis, CDM
Assistant Dietary Supervisor

Brian Begley
Housekeeping/Laundry Director

Scott Anderson
Maintenance Director

Linda Garner
Receptionist

Bonnie Hamilton
Transportation Coordinator

Cyndi DiBiase, RN
Quality Assurance Coordinator

Susan Crevar, RN
A-Wing Manager

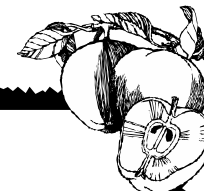
Peggy Falla, RN
B-Wing Manager

Margaret Bowers, LPN
Sunshine Way Coordinator

Our Memory quilt was growing so quickly that we moved it from the Entrance Hallway to the Center Hall, beside the Activity Department. Although it is best seen in "real life," a picture of the Quilt is included in our Photo Pages. The newest additions include Wanda Carrell's patch, which shows her love for flowers and plants. Lorraine Brocklehurst loves puppies, especially her dog, Peppy! Watching birds is one of Thelma Roxberry's favorite hobbies. The Therapy Department helped Thelma with her patch and they actually used the beautiful bird scene from one of her shirts! Angie Corbin's square proclaims her fondness for playing Bingo! If you've ever heard Gina Anderl sing, "Chiquita Banana," you'll appreciate her Banana patch! Helen Kellerman's patch reflects that she was a quilter and a gardener, and in fact, she only recently "retired" from quilting, as she has even worked on her quilts while at Orchard Manor. Dorothy Hoffman's hobby was cross stitch as shown in her square. Since Eleanor Hays was a stamp collector, her patch is made up of many different and colorful stamps. With a Valentine's Day Birthday, Vivian Greggs' square is made up of a colorful heart! Nancy Viola's patch shows that she loves the Dogwood because they are so peaceful, and also that she enjoys

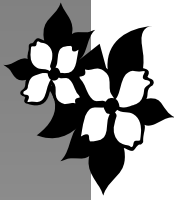
fishing and likes horses. Kathryn Houts and her daughter, Jamie, used to quilt together, and Norie Young also loves Bingo and never misses the chance to play! Darlene Gibson's patch is a beautiful cross because as Darlene says, "I walk with God!" Virginia Cicero's quilting patch represents all the quilts she made. Virginia has bedspreads and quilts in her room that she made, often from the tricot material used to make nightgowns. Her friend lived near a factory that made the nightgowns, and would share the tricot material that the factory had disposed of! Thelma Lichtenberger remembers quilting with her Mother, and her patch is actually a square that she had made. She remembers how hard it was to do the handle on the basket.

Continued on page 3

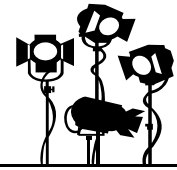


In This Issue

Senior Snickers.....	3
Employee Spotlight	4
Dedicated Staff.....	4
Residents of the Month	8
Chaplain's Chatter.....	9
Sympathy.....	10
Resident Council	10



Employee Spotlight



Laura Cook, Administrative Assistant



Laura has been with Orchard Manor for over seven years. She started out in the Housekeeping Department before becoming Administrative Assistant in 2005.

Laura worked as a draftsman at The Conair Group in Franklin for four years before moving to Grove City in 1990 after accepting a position at Cooper Energy. She was permanently laid off in 1996 and got a scholarship to go to school where she received her Associate's Degree in Graphic Design. After earning her degree, Laura worked for different companies designing everything from business cards to vitamin bottle labels.

Laura thinks that Orchard Manor is the best home in the area and she enjoys talking to the Residents and getting to know them.

In her spare time, Laura works on her second degree, a B.S. in Healthcare Management. She also likes movies, painting and drawing, reading and playing with her cat, Pepper.



Our Dedicated Staff

Service Anniversaries for March

Barb Blackson, Laundry Aide—31 years

Pat Acheson, Dietary Aide—17 years

Gerri Hodge, Dietary Aide—5 years

Jade Hilliard, Dietary Aide—2 years

Barb Riddle, LPN—2 years

Ray Rodemoyer, LPN—2 years

Jody Rouse, LPN—1 year

Congratulations



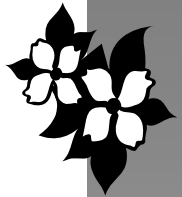
Congratulations to Matt Winder, Maintenance Helper, on the birth of his son, Stellar Nicovin. Mother Melanie and baby are doing fine. The baby weighed 9 lbs. 9.25 oz., 21 inches long, and is the great-grandson of Housekeeper, Gloria Kaufman. And...

Congratulations to Michelle Blausner, CNA on the birth of her daughter, Mickenna, 9 lbs. 6 oz. 22 inches long.



Chaplain's Chatter

Pastor Walter Mehman



A Season of Life

It's almost a month since Punxsutawney Phil saw his shadow on Gobblers Knob and predicted six more weeks of winter. It has been an exciting winter thus far with snow fall in 49 out of 50 states. I wonder which state it was that escaped the snow...

Winter can be a discouraging time of the year. First of all, it's cold and also dark. The cold can wear us out and the darkness can do strange things to our mood levels.

This season of Lent, which began on Wednesday, February 17, can be compared to winter in several ways. Lent can be seen as a gloomy time of the year because it deals with the prospect of looking inward to see where we are in our faith walk. Lent is also a season where we traditionally give something up. And we all know it's hard to imagine 40 days without chocolate. And last, Lenten Services tend to be somber in nature with an emphasis on prayers of confession and acts of contrition.

But there are other ways in which winter and Lent can be compared to each other. By the time Groundhog Day rolls around we have seen the lengthening of daylight, which gives us a feeling of encouragement. The other aspect is that increasing amount of daylight brings an increase in the amount of sunshine as the sun moves higher in the sky. Now we can see and feel that spring is coming closer. We know we can make it.

In our faith journey, Lent helps us to see and understand the wholeness of Christianity. Just as life has its difficult moments, faith also has difficult experiences. Lent gives us moments where we can work with life's difficulties in a way that brings healing and wholeness. These healing moments help us to go backward and deal with an experience or problem so that we can then move on in our life. Lent can be the time during which we see the reality and totality of who we are and where we are.

So, if the increasing amount of sunshine gives us the encouragement we need to move toward spring day by day, what will be our source of hope for Lent? I believe that Psalm 139, Verse 7 gives us the answer we are looking for. The Psalm writes; "Where can we go from your spirit? Where can I flee from your presence?" It's in Verse 10 that we find the answer to his question and our question. These are the words we need to hear and remember; "I can't go anywhere you are not, O Lord. For not only are you everywhere, but you are concerned for me wherever I am."

There is a tenacious quality to God's Love. God refuses to give up on us no matter where we are in life or what we might experience in life. God is always present and always with us. We find the treasure of Lent in the victory of Easter.

Grace and Peace,
Pastor Walt

Salute to Our Military

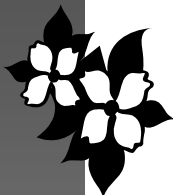
Orchard Manor would like to acknowledge family members of Residents and Staff who are currently serving in the Military.

- ☆ Spc. Steve Fox,* Army National Guard, son of Wanda Fox, CNA
- ☆ Pfc. Jeremy Fry,* Army, cousin of Amy Bailey, CNA
- ☆ E5 Sgt. Adam Reddinger,* Army Infantry, cousin of Amy Bailey, CNA.
- ☆ Sgt. Justin Robinson, Army National Guard, son of Diane Robinson, Administrator, brother of Emily Robinson, Activity Director

- ☆ Spc. Jacob Sydlik and
- ☆ Spc. Matthew Sydlik, Army National Guard, grandsons of Resident Norie Young
- ☆ Senior Airman Josh Winder and
- ☆ Senior Airman Matt Winder, Air Force Reserves, grandsons of Gloria Kaufman, Housekeeper.

*Currently serving overseas

If you have a family member you would like to recognize in the Apple Blossom, please call Laura Cook at 724-458-7760.



Did You Know?

At 5:00 pm Thursday, February 25, the daily snowfall reached .8 inches. The total for the month so far is 40.8 inches. The record for the month of February was 25.3 in 2003—until now. A typical February snowfall is 8.5 inches. This month now ranks as the snowiest month on record! And the lead continues to grow.

The top five snowiest months are as follows:

40.8" February 2010.

40.2" January 1978.

36.3" December 1890.

34.1" March 1993.

32.3" November 1950.



The snowiest season on record was 82.0 inches the winter of 1950-51. Our season total so far is 69.0 inches, ranking 2009-10 as the 8th snowiest season on record. Pittsburgh's normal is 40.6 inches. Records of winter snowfalls in Pittsburgh date back to 1884.

Source: <http://weather.kdka.com/US/PA/007.html>

Speaking of Snow...

Thank you to the Maintenance Staff for their ongoing efforts to keep our parking lots, sidewalks and even emergency exits clear! Our staff and visitors appreciate that we can always count on our parking lots being plowed, with special consideration being given to our shift times. Don't think we didn't notice, guys...especially when we had to shovel ourselves out at home and noticed that lots of other business weren't as diligent as you!



Our Deepest Sympathy

Everyone at Orchard Manor extends our heartfelt thoughts and prayers to the family and friends of the following Residents who recently passed away.

Mr. Lavern Dunn, 2/9

Mrs. Dorothy Robinson, 2/9

Miss Me, But Let Me Go

When I come to the end of the road,
and the sun has set for me.

I want no rites in a gloom-filled room.

Why cry for a soul set free

and not with your head bowed low?

Remember the love that was once shared.

Miss me, but let me go.

For this is a journey we all must take,
and each must go alone.

It's all a part of the master's plan,
a step on the road to home.

When you are lonely and sick of heart,
go to the friends we know.

Bear your sorrow in good deeds.

Miss me, but let me go.

—Author Unknown

Resident Council

This is a reminder to all Residents that the Orchard Manor Resident Council meets on the last Tuesday of each month. The next meeting is scheduled for Tuesday, March 30th at 2:30. Peg Weber is the Resident Council President. She, as well as other members of the Council, including Marian Hutcheson, Eleanor Hays and Bob Bovard, to name a few, welcome Residents to attend. Lots of topics are covered and it's a good place to ask questions, make suggestions and in general, voice your opinion! Also, the Personal Care Resident Council meets on the last Tuesday of the month at 12:30, with the same type of agenda. We hope to see more Residents at both meetings this month!

Our Memory Quilt is Growing

Continued from front

We are having so much fun with our *Life is a Patchwork of Memories* quilt, and we appreciate the staff and families who are helping Residents put their patches together. **Kudos to the Activity Department** for the patches and creativity. We welcome Residents and their families to contribute a patch. It really is fun looking at the quilt and getting to know everyone! The Activity Department is planning a similar project for staff members, so watch for the details!



Support Group

The monthly CAREgiver's Support group will be held on Wednesday, March 17th at 10:30 in the Front Solarium. The guest speaker will be Cathy Smith, Veterans' Services Officer. We will be discussing Veteran's benefits.

If you have any questions, please contact Mary Jo Palmer at 724-458-4456.

Senior Snickers

Nudity

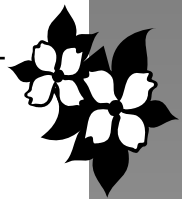
I was driving with my three young children one warm summer evening when a woman in the convertible ahead of us stood up and waved. She was stark naked! As I was reeling from the shock, I heard my 5-year-old shout from the back seat, 'Mom, that lady isn't wearing a seat belt!'

More Nudity

A little boy got lost at the YMCA and found himself in the women's locker room. When he was spotted, the room burst into shrieks, with ladies grabbing towels and running for cover. The little boy watched in amazement and then asked, 'What's the matter, haven't you ever seen a little boy before?'

New Residents!

Mrs. Verla McNutt, 2/4
Mr. Joseph Humphrey, 2/12
Violet Williamson, 2/25



Best Wishes

Best wishes to the following Residents who were discharged from Orchard Manor.

Mrs. Jean Walter, 2/12
Mr. Ralph Hillman, 2/18
Mrs. Violet Williamson, 2/26

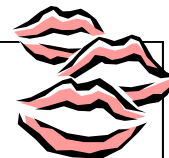
New Employees

Kelli Shollenberger, CNA
Bonnie McFarland, CNA

Welcome

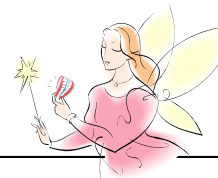


Welcome to our new Beautician, Kathleen Bowser. She has 40 years experience as a hairstylist. She will be available for appointments on Mondays, Thursdays and Fridays from 9:00 am to 5:00 pm.



The Tooth Fairy

While working for an organization that delivers lunches to elderly shut-ins, I used to take my 4-year-old daughter on my afternoon rounds. She was unfailingly intrigued by the various appliances of old age, particularly the canes, walkers and wheelchairs. One day I found her staring at a pair of false teeth soaking in a glass. As I braced myself for the inevitable barrage of questions, she merely turned and whispered, 'The tooth fairy will never believe this!'



Calendar Highlights

- Mar 9 Magic with Vance
- Mar 11 Birthday celebration with Johnny Oakes
- Mar 12 Ceramics with Clarinda
- Mar 18 Music with Dick Fisher
- Mar 22 Barry Spiker and Friends
- Mar 27 Easter Drama with the
New Lebanon Community Church

For a more thorough list of activities and times, please see the calendar on pages 2 & 11.



Happy Birthday

- 3/4 Dolores Alessio
- 3/6 Wilma Hall
- 3/6 Jessye Miller
- 3/6 Shirley Tinkey
- 3/8 Dorothy Mazza
- 3/9 Mary Dankovich
- 3/21 Rose Bishop
- 3/23 Lois Heister
- 3/24 Betty Campbell
- 3/25 Mary Weitzel
- 3/26 Tom Barnes
- 3/27 Joy Lindey



Orchard Manor, Inc.
20 Orchard Drive
Grove City, PA 16127





Residents O' the Month



Don't forget to look at the pictures of our Residents of the Month! They are on the bulletin boards located on each wing.

Harry Pears—Sunshine Way

On December 14, 1918, Harry Oliver Pears was born to James O. Pears and Mildred I. Simpson Pears of Mercer, PA. He was one of six children. Harry enjoyed horses and worked at the old Mercer Racetrack grooming and exercising race horses. Harry also enjoyed sports while in school, earning letters in football and basketball. He was captain of both these teams.

On January 24, 1941, Harry enlisted in the United States Army. He was sent to Camp Shelby, Mississippi then on to New Zealand for more training. Next Harry went island hopping to Guadalcanal, New Georgia, Bougainville and Luzon in the Philippines while serving with the Service Battery 135th Field Artillery Battalion 37th Infantry Division. After the war, Harry went to Camp Atterbury, Indiana, for separation with the rank of Tec/5 on October 5, 1945.

Harry married the former Virginia A. Nickita in June of 1948. Virginia passed away on March 9, 1996.

Harry has two sons, James and his wife Roberta, Wayne and his wife Rebecca, also one daughter, Karen. He has four grandsons, Edward and his wife Lorraine, James, Michael and Mark and one granddaughter, Michelle. The family circle is completed with two great-granddaughters, Haley and Taylor Pears.

Betty Hoffman—Personal Care

Elizabeth "Betty" Dillon was born in 1918 in Cleveland, OH to parents Elizabeth and Samuel Dillon. She has a brother, Sam, who is almost three years younger than her.

Betty grew up in Mercer and attended Mercer High School. After graduating, she commuted to Grove City College where she was a Latin and French major. She taught school for three years. One year was in Pleasantville, near Titusville, PA, and the other two were spent in Polk, PA.

Betty married Richard "Dick" Hoffman. The couple lived in Mercer, then moved to Grove City on State Street. They had two sons, Thomas and Robert. After Dick's death in

Ethel Mae Allison—A-Wing

Ethel Mae was born July 14, 1926 to parents Earl Waldo and Ethel Mae Fell in Transfer, PA. Mae, as she likes to be called, was one of 10 children. She had five brothers and four sisters, Raymond, Darrel, Merle, Alton, Earl, Flora, Dorothy (all deceased) Aleta and Norma.

When Mae was 13 years old, the family moved from Transfer to Greenville. She attended Riverview and Reynolds Schools. Her first job was at Isaly's in Greenville.

On May 26, 1953, Mae married Paul Allison. The couple did not have any children. After getting married, Mae started work in the cafeteria in Greenville Hospital, where she remained for 28 years.

Marie Brown—B-Wing

Marie Brown was born in Pittsburgh on October 8, 1921 to parents John and Catherine Brown. Marie was one of three children. She had a brother, John, who is now deceased and her sister, Margaret is her roommate at Orchard Manor. The two sisters are almost always seen together.

When Marie was younger she went to Portersville Schools, where she reached the 6th grade. Growing up on the farm, she learned to churn butter and worked in a big chicken coop and cleaned the eggs. She remembers the family pet, a white poodle.

Marie never married or had children, but lived with Margaret and her husband, where she helped with the housekeeping and other chores. She enjoyed doing the dusting and washing the dishes after meals.

Many of our staff call Marie "Smiley" because she is always smiling and pleasant. Marie enjoys watching Jeopardy and loves Jell-O, any flavor. If she could travel anywhere, she would go to Florida to see family.

1970, Betty moved to College View Towers. Her son Tom now lives in Ashland, Oregon and Bob lives in San Diego, California. He has one adopted child, Anisa, 15, Betty's grand daughter.

Betty's hobbies include baking and reading. She enjoys music and used to go to concerts. She also does embroidery.